

**ERATE 470 FORM #918380001257479 REQUEST AND
REQUEST FOR PROPOSAL (RFP) FOR:
NETWORKING EQUIPMENT
Madison Public Schools**

MADISON PUBLIC SCHOOLS (MPS) is seeking proposals for the upcoming Funding Year 15-16 round of E-Rate. MPS is soliciting proposals for the purchase and installation of network electronics. All services are to be completed within the guidelines and regulations for local, state, and the federal E-rate program.

SERVICES REQUESTED:

- **Network Switches, Wireless Access Points, Ethernet Network Cabling, Caching Server, UPS, Equipment Racks, Wireless Controller**

MPS aims to use the latest Wireless Access Points utilizing POE gigabit Ethernet or better hardware throughout the district for ERATE bidding. The district includes three locations.

The RFP reflects the current proposed services requested on the Erate 470 forms. The proposal embodies the Madison High School, 700 South Kent St, Madison, NE, 68748 and Madison Elementary School, 405 East 8th, Madison, NE 68748

MPS consists of about 52 classrooms, multiple computer labs, multiple gymnasiums, multiple commons areas, and multiple libraries. There are currently 5 Intermediate Distribution Frames (IDF) throughout the campus and a Main Distribution Frame (MDF) in the Distance Learning Room containing the telco demarcation.

The high school building consists of about 22 classrooms, 6 offices, a gymnasium, multipurpose rooms, and a library. There is currently 1 MDF location and 2 IDF locations. A Main IDF is located in the Distance Learning room on the lower level of the north wing and contains the telco demarcation. An IDF is located in the upper level of the north wing Rm 120 which connects to the MDF via copper Ethernet. A larger IDF near the lower level library in the computer wiring closet is connected to the IDF in Rm 120 via copper Ethernet.

The middle school building consists of about 6 classrooms, and a teacher's workroom where a small IDF is located and connects to the Library IDF.

The elementary consists about 24 classrooms, 4 offices, a gymnasium, a multipurpose room, and a library. An IDF is located in 117A which connects to the high school library IDF via fiber. The other IDF is located in 142 which connects to the previously mentioned IDF via copper Ethernet.

The successful bidder(s) will be responsible for qualifying for and adhering to the Federal E-Rate program. Items not eligible for E-Rate must be itemized in the bid. Prices must be held firm for the duration of the E-Rate Year. These projects and services depend on partial funding from the E-rate program and should be completed within the funding year.

- Applicant expects each Service Provider to make themselves thoroughly familiar with any rules or regulations regarding the E-rate program.
- All contracts entered into as a result of this RFP will be contingent upon the specific funding of the FRN at the percentage rate submitted.
- The maximum percentage the Applicant will be liable for is the pre-discount amount minus the funded amount or ineligible portion as shown on the form 471 Block 5.
- In the event of questions during the E-Rate PIA review process, the successful vendor is expected to reply within 3 days to questions associated with their proposal.
- The contractor is responsible for providing a valid SPIN (Service Provider Identification Number) at the time the bid is submitted.
- Any potential bidder found to be in Red-Light Status will be disqualified from participation in the bidding process and will be considered non-responsive.
- Vendor understands that they may be asked to work around school schedules to avoid impacting classroom or busy office times.

The Applicant reserves the right to deny any or all proposals associated with this RFP, even with SLD funding approval. Applicant reserves the right to consider existing piggyback, open RFP, open 470, etc....

Failure to follow the above criteria and requirements may be considered grounds for disqualification.

Proposals must be addressed to our office location noted below.

Technology Coordinator

Madison Public Schools
700 South Kent
Madison, NE 68748
Telephone: 402-454-3336

PROJECT

This proposal shall be broken down into two options:

1. Full proposal (hardware and labor) to include:

- b. Vendor to propose and coordinate configurations with MPS prior to installation, in order to provide a "turn-key" delivery. This includes, but not limited to, configuring (per MPS specification) equipment naming, IP addresses, protocols, NTP servers, SNMP settings, etc...**
- c. Install the specified network electronics equipment into provided or project included wall mounted or freestanding electronic equipment racks.**
- d. Perform power-on system and functionality tests.**
- e. Perform and demonstrate a verification of network connectivity and functionality.**
- f. Verify access to the Internet and to MPS resources**
- g. Provide documentation listing all equipment, part numbers, quantities, serial numbers, IP addressing and equipment naming.**
- h. Provide proposed coverage map and post install verification of coverage.**

2. Equipment and installation separately per equipment listed (ei. AP plus installation or switches plus installation) to include:

- a. Delivery of each component to its designated secured location.**
- b. Provide documentation listing all equipment, part numbers, quantities, and serial numbers.**

HARDWARE EQUIPMENT

WIRELESS ACCESS POINT EQUIPMENT:

Each wireless access point should have a dual radio (antenna) design. Each access point should be able to provide at minimum 802.11a/b/g/n standards within the 2.4GHz and 5GHz bands. Each access point should have at least one gigabit uplink port. Each access point should be able to provide 4 or more BSSID. Each access point should have the ability to be managed by a central system. Each access point should be compatible with current system unless all equipment is to be replaced.

WIRELESS CONTROLLER SYSTEM EQUIPMENT:

The controller should be able to contact and control all currently or newly installed equipment.

NETWORK CABLING EQUIPMENT:

All network wire should be Category 6 rated or better with compliant Category 6 accessories used, i.e. all patch panels are Category 6 rated and the RJ45 termination ends should be Category 6 rated.

NETWORK SWITCHING EQUIPMENT:

Must have such design to integrate seamlessly with existing head-end and downstream equipment. MDF must have port density and fiber connectivity to support all IDF's and administrative users. All services must cover all classrooms, labs, library, and administrative buildings. All switches must be scalable to at least Gigabit, and POE+.

CACHING EQUIPMENT:

Equipment must be able to provide a caching service for iOS updates for more than 100 iOS devices.

UPS (UNINTERRUPTABLE POWER SUPPLY) EQUIPMENT:

Each IDF and MDF location must have a UPS with enough capacity to provide at least 30 min of runtime at the current equipment load.

RACK EQUIPMENT:

Rack equipment needs to be at least 6U. Depending on location will dictate size, form factor, and installation requirements.

Evaluation Procedures

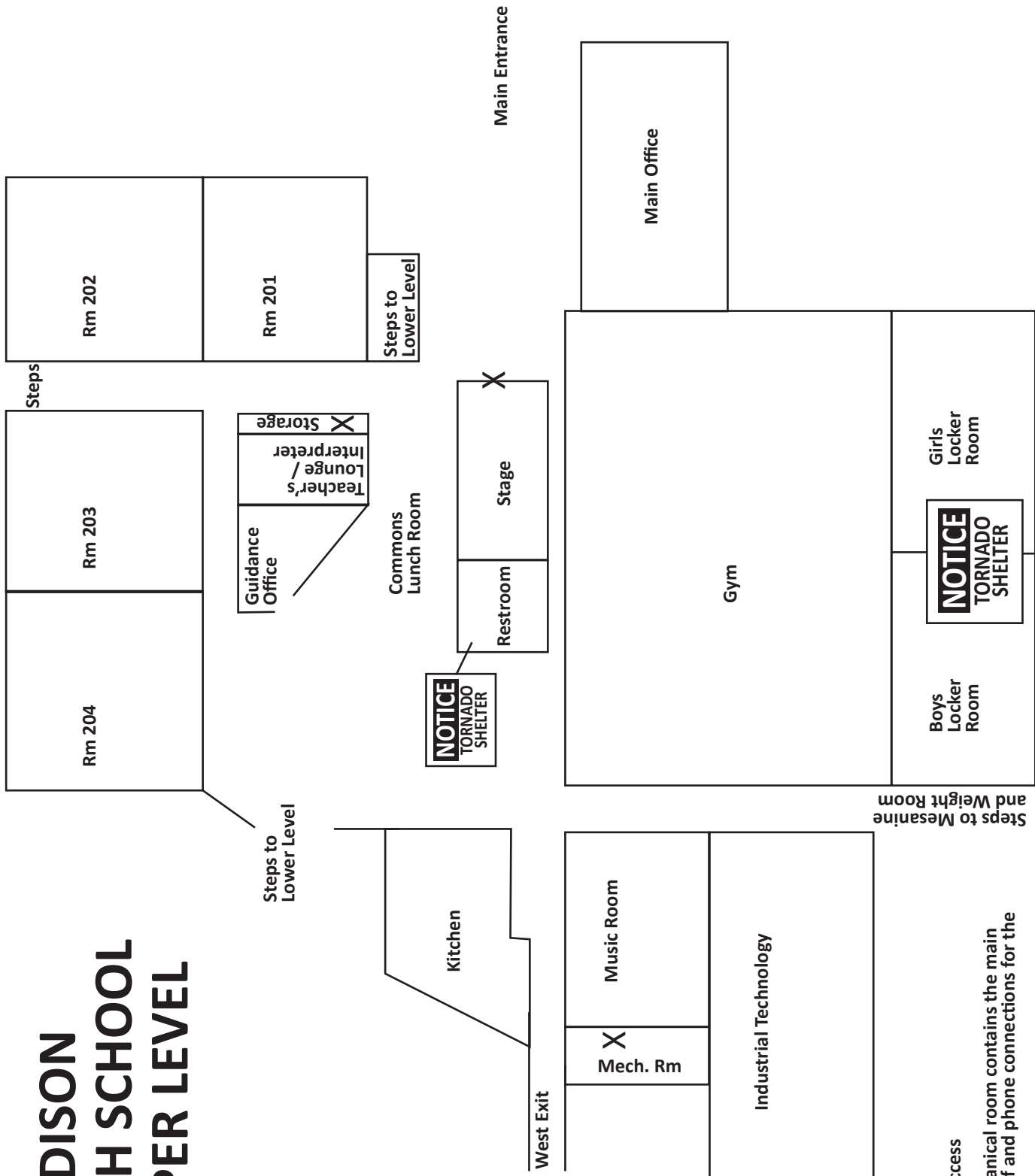
The evaluation will be performed by the RFP Coordinator and evaluation staff for services proposed. The evaluators will consider how well the vendor's proposed solution meets the needs and criteria set forth in the fair and competitive bidding process using the below matrix. It is important that bids be itemized, clear, and complete so that the evaluators can adequately understand all aspects of the proposal. Evaluation results are confidential and the property of MPS.

Evaluation Scale:

On sight visitations must take place on January 7, 2015 from 9:00-11:00 please contact Trish Braithwait at 402-454-3336 with additional questions.

Factor	Weight
Price of Eligible Goods and Services	30%
Walkthrough	20%
Qualifications	15%
Prior Experience	15%
Distance from District	10%
Bill Methods	5%
E-rate Experience	5%

MADISON HIGH SCHOOL UPPER LEVEL



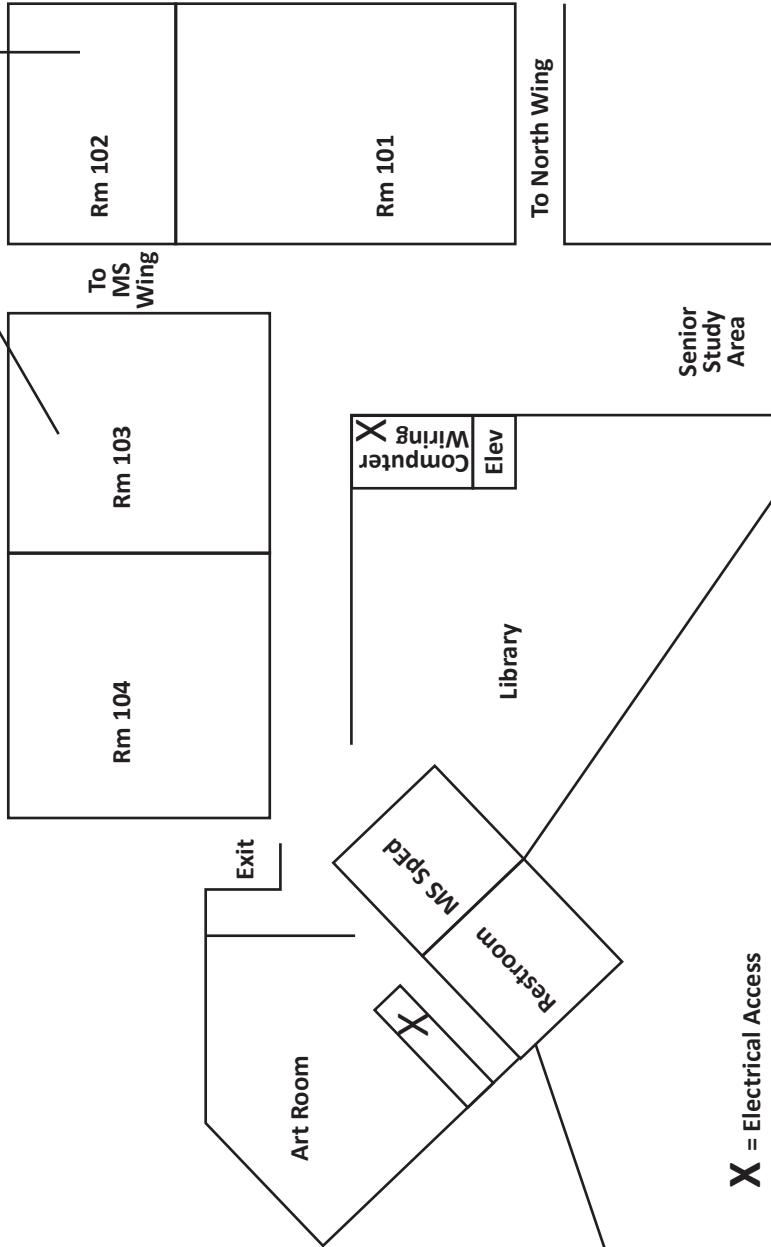
X = Electrical Access

NOTE: The mechanical room contains the main electrical shut-off and phone connections for the entire building.

MADISON HIGH SCHOOL LOWER LEVEL

FOR MIDDLE SCHOOL

NOTICE
TORNADO
SHELTER

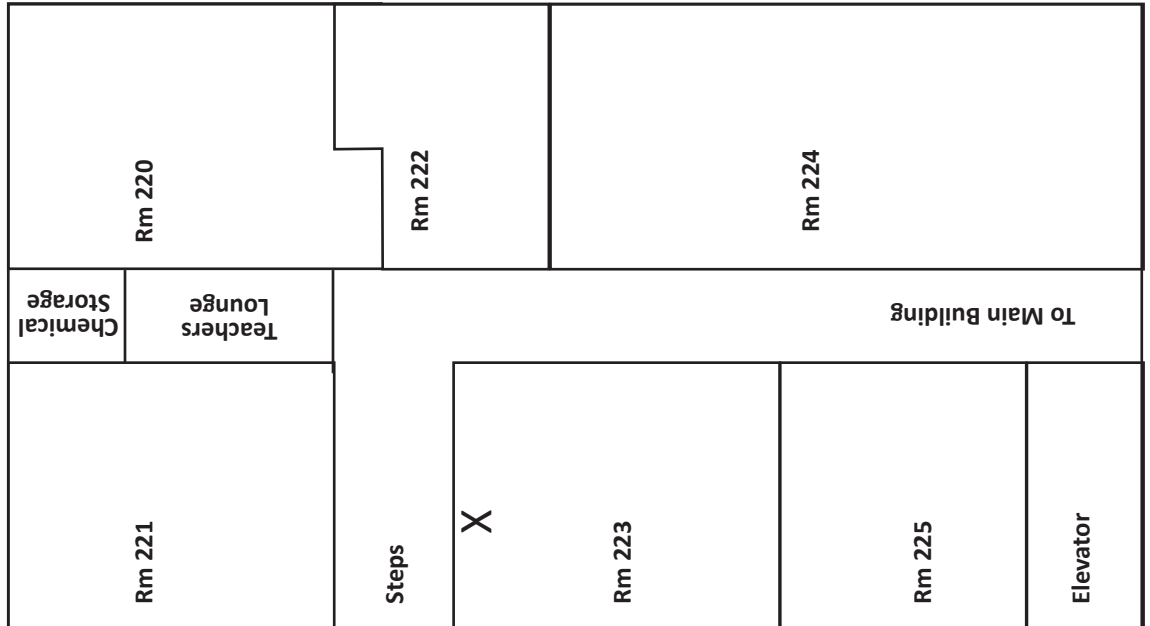


X = Electrical Access

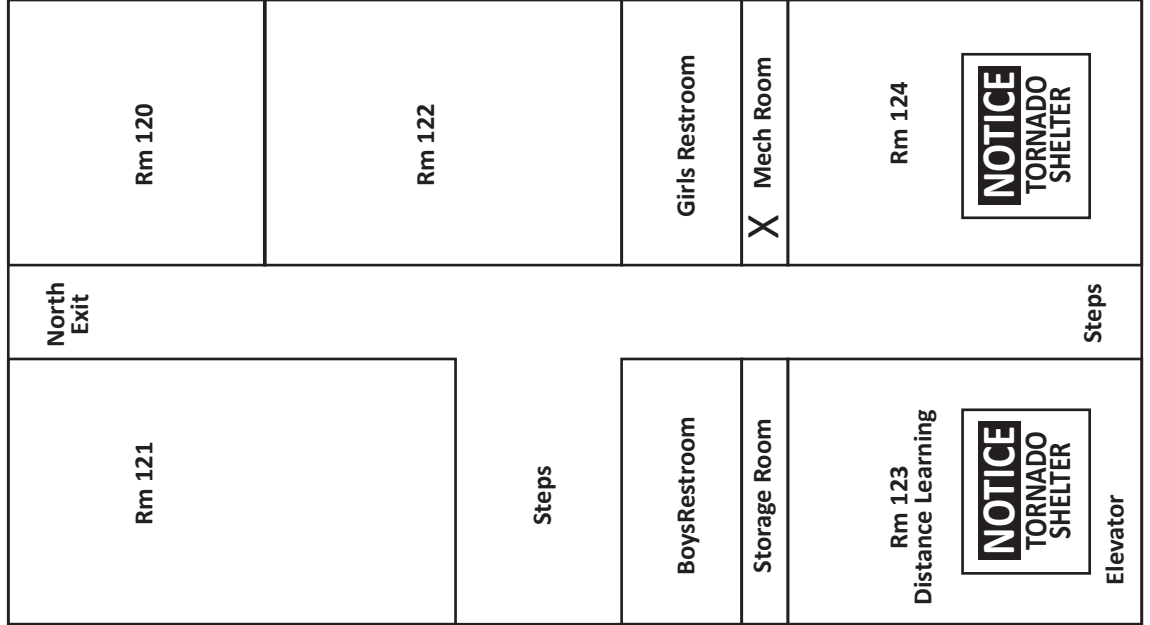
NOTICE
TORNADO
SHELTER

MADISON HIGH SCHOOL NORTH WING

UPPER LEVEL

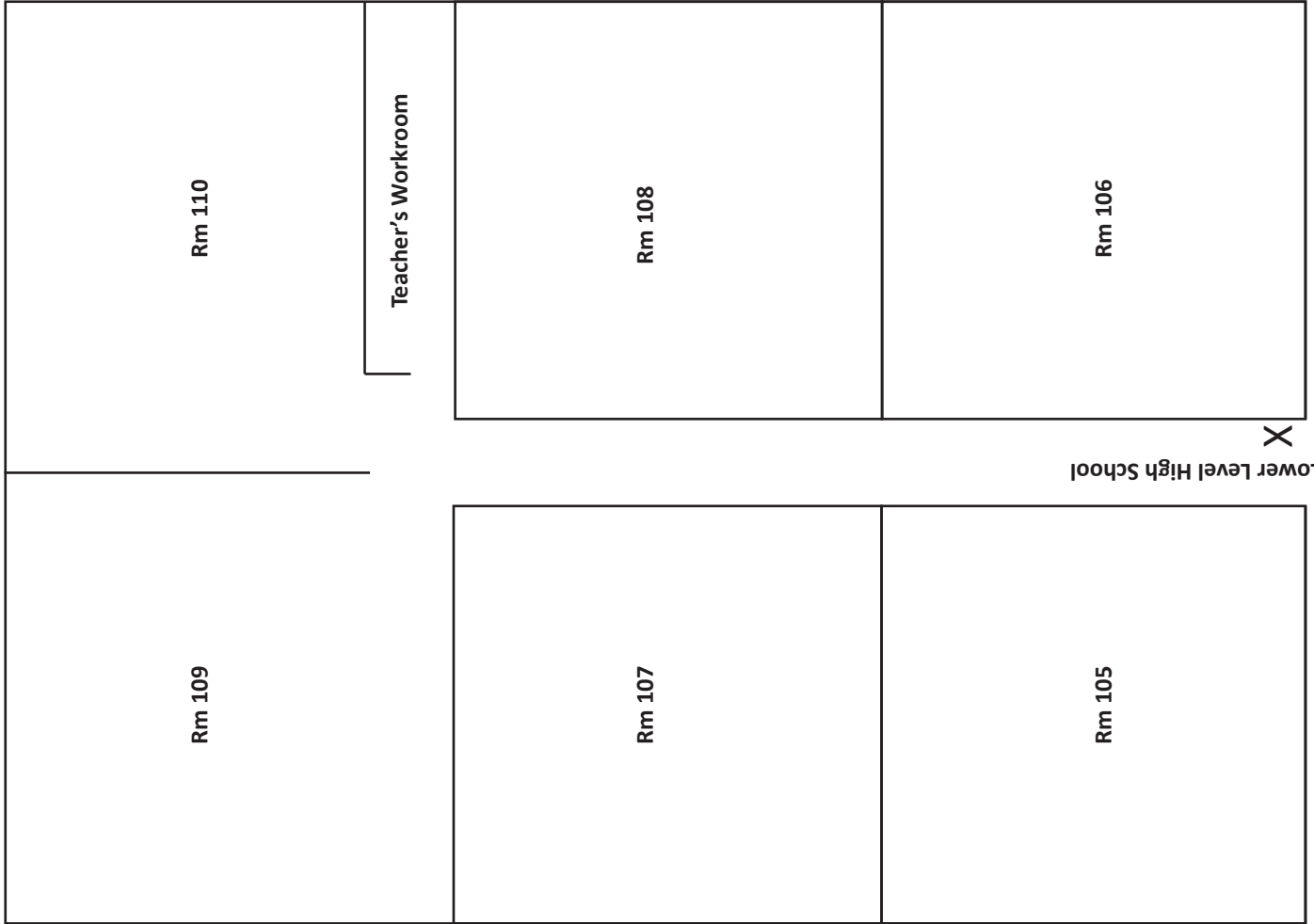


LOWER LEVEL



X = Electrical Access

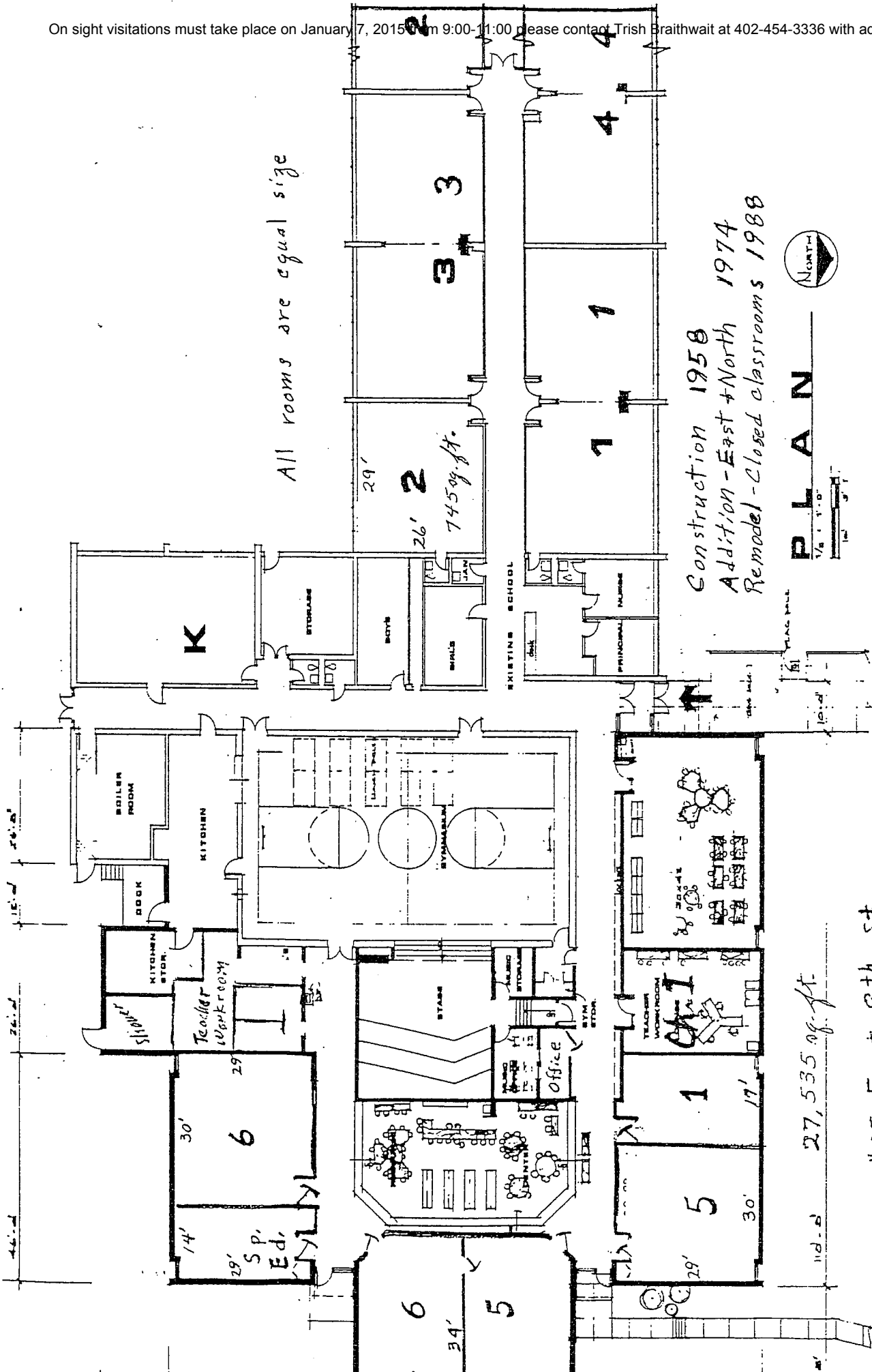
MADISON MIDDLE SCHOOL WING



To Lower Level High School

X = Electrical Access

On sight visitations must take place on January 7, 2015 from 9:00-11:00 please contact Trish Braithwait at 402-454-3336 with additional questions.



All rooms are equal size

Construction 1958
Addition - East + North 1974
Remodel - Closed classrooms 1988



405 East 8th St.

MADISON ELEMENTARY SCHOOL